

ARKY's News

Volume 25, #4

Read our newsletters online at <http://www.arky.org/newsltr/>

Jan-Mar 2020

Inside this issue:

<i>Big Changes at the Creation Museum</i>	1
<i>The Wonder of it All: Fearfully & Wonderfully Made</i>	2
<i>Humanism as Religion: Fundamental Science?</i>	4
<i>The Beginning of the Creation</i>	5
<i>Dinosaur Soft Tissue, Fragile but Intact</i>	6
<i>KIDs Korner</i>	7
<i>ARKY's Calendar of Events</i>	8
<i>Guest Speaker in March</i>	8
<i>Financial Statement</i>	9
<i>Membership renewal form</i>	9
<i>Reminder: New location for monthly ARK Meetings</i>	10

Our new mailing address:
 1255 N Fairfield Rd.
 Box #3
 Beavercreek, OH 45432



Newsletter Editor
 Mark Jurkovich

ARK Board Members
 Jeannie Day
 James R. Johnson
 Kathy Jones
 Mark Jurkovich

BIG CHANGES AT THE CREATION MUSEUM

By Mark Jurkovich

I had the privilege back in November to attend the grand opening of the new exhibits at the Creation Museum. Roughly the first 1/3 of the museum has been redone. There may be a few favorites of the old exhibits that some folks will miss, but overall, I believe the change is very positive. What I especially like is that a lot more evidence in support of the truth of the Bible is now presented, with much archaeological evidence given as well as scientific evidence. Two sections have the same name as before (Starting Points, and Biblical Authority), but have been completely redone.

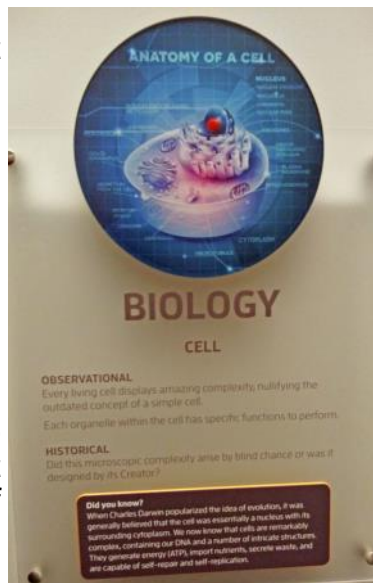
Once you pass out of the lobby area, you immediately see the difference. Gone is the archeologist exhibit introducing the two world views. In its place is a large video screen that plays a couple minute introduction to the two world views. The next room is packed with examples from science pointing out the implications of the two world views and providing evidence sup-

porting the Biblical view. Examples include the complexity of the cell, radiometric dating and the concept of created kinds. Note that the Lucy model will be coming back but was not there for the opening.

The Biblical Authority section is now packed with information on various Biblical events and people, and includes archeological evidence confirming the truth of each person/event as given in scripture. It starts with an introduction of the authority and inerrancy of the Bible. Then, in place of the life size mannequins of biblical characters, are video images of the characters along with the information about them. Among the people/events covered are

Joseph, the fall of Jericho, Kings David and Hezekiah, Daniel, and of course, Jesus. The reliability of the preservation of the original Biblical text, and description of the Biblical Canon are also covered.

The new Relevance of Genesis room is perhaps the most unusual of the new exhibits. It replaces the Culture in Crisis exhibit and the Wonders room. It is told through



Sample from "Starting Points"

(Continued on page 5)

The Wonder of It All: Fearfully and Wonderfully Made

By Mark Jurkovich

At the Creation Museum opening I attended (see *article on page 1*), they also announced their next project. It will be an exhibit on the wonder of life, especially developing life in the womb. As a thank you for donating that night, donors were given a copy of the newly released DVD by Dr. David Menton titled "Fearfully & Wonderfully Made: When Human Life Begins". This video opened my eyes to further wonders of God's loving, creative handiwork.

In every step along the way from ovulation to conception to birth, Dr. Menton pointed out marvels of God's ingenious and loving design for the propagation of life. I will try to touch on the highlights in this article, but I encourage you to come to the January ARK meeting to see the DVD for yourself.

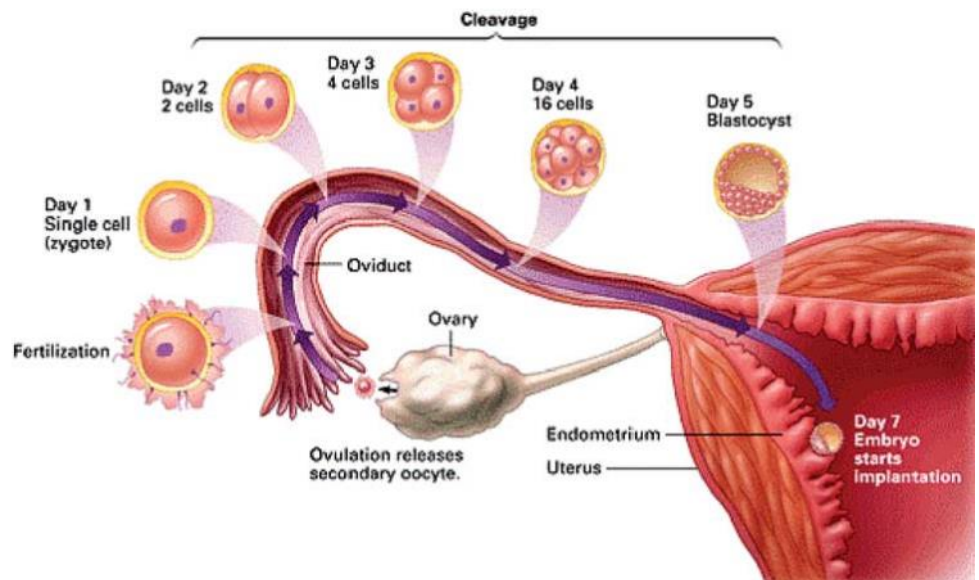
Starting at the ovaries, David pointed out that normally they take turns producing an egg with each producing one every other month. But when one stops functioning, the other will take over and produce an egg every month! Each female by the way is born with around a million undeveloped eggs (called primordial follicles). Every month 30-40 of these will start developing, but with only one (sometimes two; fraternal twins) reaching maturity. The one making it to maturity will accumulate fluid in it, growing to the size of a grain of salt, visible to the naked eye. This fluid is to serve as the initial nutrition source for a fertilized egg.

When the mature egg is released from the ovary, it leaves behind what is called a ruptured follicle, which serves another purpose by producing hormones telling the rest of the system to prepare for the egg. This rupture, however, also leaves a scar. But this is one of the only places where scars (one new one each

month) are dissolved, eventually going away! If not, the whole system would eventually break down as the ovary becomes one big scar.

Throughout the talk, Dr. Menton made frequent references to irreducible complexity of conception and development in the womb. He never used those words but would say things like "how's dumb luck working for you now?" in reference to those who claim all this came by chance. This dissolving of the scars was the first place Menton mentions it.

The funnel at the end of the oviduct actually positions itself to catch the egg about to be released. It then takes about a week for the egg to make it all the way down the oviduct (also known as the fallopian tube). Several key things must then be in place to move the egg



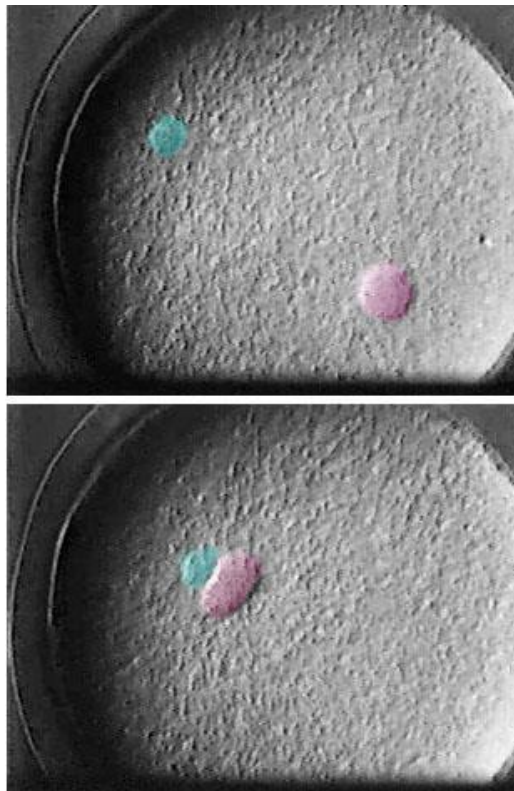
down the duct. The duct is lined with cilia that moves in a sequential wave motion, otherwise the egg would not move down. But also needed are other cells that surround the egg (called cumulus oophorous) which make the egg 'sticky' enough for the cilia to move it. Without any one of these (cilia, wave motion, 'sticky' cells) reproduction would not happen.

What about the fertilization process itself? Once again there are many steps that all need to be in place by God's marvelous design. First the sperm needs to be prepared by

(Continued on page 3)

(Continued from page 2)

chemicals in the female for at least 12 hours before it is "capacitated" and ready to be accepted by the egg. Out of the millions of sperm, typically only a few dozen make their way to the egg. Then the sperm must release a special enzyme to digest its way through the cloud of cells around the egg, then another enzyme to make it through the shell of the egg. Even then, it will not get through unless the egg allows it by meeting certain criteria; that it is a sperm, that it is capacitated, that it is the right species, and that another sperm has not already been allowed in. Once allowed in, only the chromosomes enter, the tail and everything else stay outside.



Pronuclei before and after contact

But conception is not complete yet. Once inside, the two pronuclei of the egg and sperm must touch each other and merge their chromosomes. That is when a new life begins.

The journey in the womb, however, is barely begun. As the journey down the oviduct continues, the zygote starts to divide and continues to divide into more and more cells. But the amazing thing is, the zygote maintains the same size, otherwise it would get stuck in the tube! The developing baby does not begin to increase in size until safely implanted in the womb.

Before implantation, the zygote starts subdividing its cells in what is called the blastocyst stage. The "inner cell mass" is the developing baby. What is the rest for? It will become the placenta.

There is much more that is covered in the video, especially on the marvelous design of the placenta and its

many functions. But I will leave you to watch the DVD itself. (come out for the January meeting!)

One last item I would like to touch upon that was mentioned in the video is that the developing baby goes through four different methods for receiving its nutrition along the way. First is the 'yolk' part of the egg that nourishes the baby until implantation, then temporary glands in the uterus nourish the baby until the placenta is ready, then the placenta takes over until birth, then of course is mother's milk after birth until old enough to eat regular food.

Needless to say, the whole process which God has designed into the forming of a new life is packed with wonder upon wonder. Truly we are all fearfully and wonderfully made.

Image credits:

Oviduct image: <http://www.ft.lk/article/564326/Lanka-Hospitals-surpasses-900-IVF-babies>

Pronuclei: <http://worms.zoology.wisc.edu/dd2/echino/fert/pronuclei/pronuclei.html>

Blastocyst: <https://www.lifefertility.com.au/resources/factsheets/blastocyst-culture/>

Images adapted for use in accordance with federal copyright (fair use doctrine) law. Usage by ARK Foundation does not imply endorsement of copyright holder.



Blastocyst stage

Humanism as Religion: Fundamental Science?

By Kevin Hadsall

As previously explained in Part 2 of the Humanism as Religion debate, the evolutionary worldview is dependent upon humanistic faith, not science. Yet, there is a huge deception in our culture that molecules-to-man evolution is based on observable, testable, and repeatable science. Humanists PK and JD claim that evolution is a "fundamental science" and "secure fact." I respond to these claims in Part 3 of 6 of the debate, shown below. As always, names are abbreviated for privacy.

PK: Evolution is not a by product of religion like creationism and not associated with any religion. Given that atheists believe in it does not make it atheistic. Evolution is taught as a fundamental science, any explanation given from its tenets is subject to change with accordance to newer and better information. That is why it is taught in a scientific classroom because with current tools, techniques and current understanding of workings of the world have put it better than any form of religious beliefs of creation. So No No No, if evolution is to be removed a better idea should be put forth that is more scientifically accurate than it.

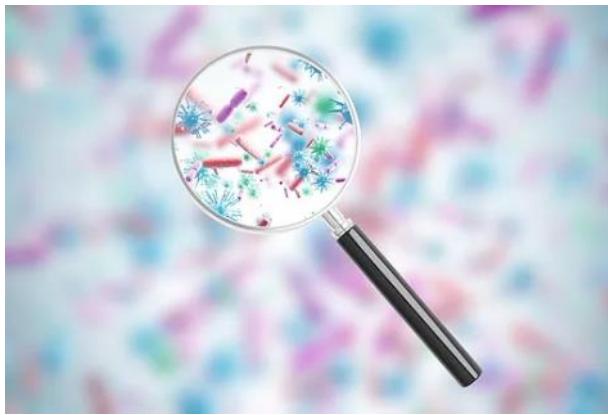
JD: Evolution is not a "foundational belief" of atheism. An atheist is simply someone who doesn't think there's enough evidence to believe a supernatural dimension exists. Evolution is a secure fact in science, and is no more a "belief" than the germ theory of disease.

Me: PK, *"Evolution is not a by product of religion like creationism and not associated with any religion. Given that atheists believe in it does not make it atheistic."*

How do you define "religion"? I suppose there are many connotations, but regardless of how somebody defines religion, there is not a single person on this planet that is not trusting in some sort of authority or "god"...whether that is the God of the Bible, some other professed supernatural entity, or the god of self and/or hu-

man opinion. The evolutionary worldview requires faith...faith in human opinion/understanding of our origins, absent from any kind of divine revelation from a supernatural entity. That, by definition, is the religion of humanism. As the Bristol Humanist Group says, "Humanism is an approach to life based on reason and our common humanity, recognizing that moral values are properly founded on human nature and experience alone" (<https://americanhumanist.org/what.../definition-of-humanism/>).

"Evolution is taught as a fundamental science, any explanation given from its tenets is subject to change with accordance to newer and better information. That is why it is taught in a scientific classroom because with current tools, techniques and current understanding of workings of the world have put it better than any form of religious beliefs of creation."



How so? How is evolution observable, repeatable, and testable? I will pose the same questions to you that I posed to BM: Can you provide observable, repeatable, and testable examples of the following? (1) Life evolving from non-life, and (2) "upward" changes in the geno-

type and phenotype of an organism, such as an originally-blind organism evolving eyesight, or an originally flight-less species developing the ability to fly?

"So No No No, if evolution is to be removed a better idea should be put forth that is more scientifically accurate than it."

Yes, perhaps the science classroom should focus on concepts that are observable, repeatable, and testable. That's called observational (or "operational") science: <https://answersingenesis.org/.../science/nature-of-science/>

Me: JD: germs are observable. You can test for germs and repeat experiments with germs. "Molecules-to-man" evolution is not observa-

(Continued on page 7)

The Beginning of the Creation

By Henry M. Morris, PH.D.

“For in those days shall be affliction, such as was not from the beginning of the creation which God created unto this time, neither shall be.”
(Mark 13:19)

The phrase “from the beginning of the creation” or equivalent occurs at least six times in the New Testament, indicating beyond question that the world was created at a definite beginning-point of time. All other cosmogonies, on the other hand, are evolutionary cosmogonies, which deny a real beginning for the space/time cosmos at all.

What almost seems a redundancy in our text is the phrase “the creation which God created.” Evidently the Lord thought it vital to stress the fact of divine creation, especially as the great last-days “affliction” draws near.

Pick up your free copy of ICR’s Days of Praise daily devotional booklet at any monthly ARK meeting.

That the “creation” mentioned in this verse refers explicitly to the cosmos is evident from the parallel passage in Matthew 24:21, where the same prophecy is rendered as follows: “For then shall be great tribulation, such as was not since the beginning of the world to this time.” Here “world” is actually the Greek kosmos, referring to the ordered universe of heaven and Earth. Thus, according to the Bible, the entire universe (including even time itself) came into existence at the “beginning” when God created it, as recorded in Genesis 1:1.

Note especially the significance of Mark 10:6 in this connection: “But from the beginning of the creation God made them male and female.” Jesus was here quoting from the account of the creation of Adam and Eve (Genesis 1:27) and included what seemed an almost incidental confirmation that God created them, not after many billions of years of cosmic evolution, but from the very beginning of creation! Man and woman were not divine afterthoughts, as evolution would imply, but were the very reason why God created the universe in the first place. HMM

Originally appeared in Days of Praise, SUNDAY, FEBRUARY 17, 2019 (<https://www.icr.org/article/11074/>)

(Creation Museum News — Continued from page 1)



Biblical Authority Exhibit example

the eyes of a young adult weighing the implications of the Relevance of Genesis. The exhibit also serves as a call for the church to return to its foundation.

One can easily spend hours soaking up all the



Scene from Relevance of Genesis Exhibit

new information contained in the new exhibits. The only problem now is one may become overwhelmed with the vast amount of information now presented. (the engineer/scientist in me loved all the new data/information 😊)

I therefore encourage you to plan a trip to the Creation Museum, even if you have been there relatively recently. The changes are well worth the trip.



Dinosaur Soft Tissue, Fragile but Intact

by Jay Wile / December 23, 2019

Editorial note. This article was extracted from "The Creation Club" web site, another great on-line resource for creation science information. Be sure to check out other great information at, <https://thecreationclub.com/>

Mark Armitage and James Solliday at the Dinosaur Soft Tissue Research Institute have been doing some amazing work. On October 5th, Mr. Armitage presented their findings at Lower Columbia College. Apparently, he has not yet received the video of that presentation, so he kindly posted a quick overview of the content. To me, it is astounding: ([link to video](#))

While everyone should watch all 15 minutes of the presentation, I want to highlight the things that I think are most important.

At 2:29, he shows two images that elicited an audible gasp from me when I first saw them. To understand just how incredible the images are, you need to know that there are one-way valves found in vertebrate veins. This is because the blood pressure in a vein is so low that blood can actually travel backwards. To prevent that, there are delicate, one-way valves throughout the veins. They open when the blood is flowing the correct way, and they close to prevent it flowing backwards. In the left-hand part of the image at the top of the post (copied from the presentation), you see a circle with what looks like a partially-opened tent flap. The circle is the base of the valve, and the "tent flap" is the delicate membrane that opens and closes. In that image, the valve is partly open. On the right-hand side, the valve is fully open.

This is incredible to me, because I have tried to dissect animals and extract these valves. I have never been able to. They are so delicate that I end up destroying them in the dissection process. Now, of course, I am not much of a biologist, and I am even less of an expert at dissection. Nevertheless, my experience with them indicates that they are absurdly delicate. Yet, here they are in a dinosaur fossil! Not only does this give evidence that the fossil is not millions of years old, but it also shows that these

are definitely not structures that come from fungi or bacteria which recently invaded the fossil. Bacteria and fungi do not build structures with these delicate, one-way valves! He also presents other evidence that rules out bacterial and fungal contamination.

At 8:22, he shows red blood cells from a fossil that is supposed to be 400 million years old! The cells have the appropriate size and shape for red blood cells. Later on (12:05), he shows a blood vessel from a dinosaur fossil that has not even collapsed! It has an air bubble in it. When he does a stain test to see what is in



the blood vessel, the test indicates that there is RNA in the blood vessel!

At 6:47, he shows what appears to be blood clotted in the tissue. He shows how it behaves just like you would expect blood to behave when exposed to polarized light, and he also shows that iron from the blood has not spread into the bone tissue. This is important, because Dr. Mary Schweitzer has proposed that iron might be preserving the soft tissue found in dinosaur bones. There has [*sic*] already been several arguments (see [here](#) and [here](#)) that seem to invalidate Dr. Schweitzer's hypothesis, but this observation is the nail in the coffin. Iron can't be preserving bone tissue if it doesn't spread into the bone to begin with!

I have said this before and will say it again: It's a wonderful time to be a young-earth creationist!

<https://thecreationclub.com/dinosaur-soft-tissue-fragile-but-intact/>

[Originally published as [Incredibly Fragile Dinosaur Soft Tissue](#)]

Kids Korner

The Grand Canyon

by Troy Lacey on September 21, 2018 and posted at Kids Answers of Answers in Genesis

The Grand Canyon is located in northern Arizona in the southwestern United States. It is truly an awesome sight: 277 miles long, up to 18 miles wide, and up to a mile deep. Because of its size you can see out across the canyon for miles, look down and see the Colorado River in some places, or see side canyons that extend out of range or beyond your line of sight. If the sun is rising or setting, you can see shadows creep across the canyon walls or watch the shadows fade and reveal bright red, gray, or white rocks on the cliff faces. You can even stand on the rim and watch birds fly below you, or maybe you'll be able to see a bighorn sheep climbing the rocks.

There are opportunities to whitewater raft the Colorado River at the bottom of the canyon or ride mules down from the rim into the canyon. Some private stables operate horseback rides into the canyon too. Others choose to hike or just stand at the North or South Rim and look out over the many plateaus of the Grand Canyon. Bus and bicycle tours are also available. There are even airplane and helicopter tours of the Grand Canyon for those who are more adventurous and not afraid of flying..

But the truly magnificent part of the Grand Canyon is looking at it as evidence of the rapidly



The Colorado River winds 277 miles through some of the most magnificent scenery on earth. There are dramatic testimonies of a recent, worldwide Flood, such as the lack of debris at the river's edge.

deposited sediment layers during Noah's flood followed by powerful and rapid erosion by huge volumes of moving water as the flood receded. Canyons don't require millions of years to form with a river slowly carving away the rock. The Grand Canyon is evidence of what a lot of water over a short period of time can do.

Image credit: by Answers magazine, July–August 2017, pp 50–67.

Be sure to check out the cool short video on canyons at the end of this article: <https://answersingenesis.org/kids/geology/visiting-grand-canyon/>

And be sure to check out more great articles at: <https://answersingenesis.org/kids/>



(Humanism; Continued from page 4)

ble. Can you answer the questions that I posed to BM and PK?

Me: Have a good night guys, I will check back on the thread tomorrow night.

The next evening, I did check the thread and there were replies from several humanists, including a few who were new to the discussion thread. One humanist asks "what happens if you believe in god and believe he created man through evolution?" Moreover, BM (from Part 2) replies and simply throws a jab at Answers in Genesis. I will share their comments and my rebuttals in the next post, where I will share Part 4 of 6 of the debate.

See Kevin's other blogs at:

<https://www.unmaskinghumanism.org/>

or check out his speaking ministry at

<https://www.unmaskinghumanism.org/creation-mission>

ARKY's Calendar of Events (as of 7/1/19)

See more details and complete list at
<http://www.arky.org/current/index.htm>

***Jan 13, 7:00 pm to 8:35 pm. DVD: Fearfully and Wonderfully Made** with Dr David Menton, at Faith Christian Fellowship. Have you ever marveled over a newborn child? We stand in awe at the detail of their tiny features, fingers, and toes. As we consider the miracle of life, we may ask, "When does life begin?" Discover what the embryological development of the human body tells us about our Creator. Explore the amazing sequence of fertilization, implantation, development of the placenta, and finally the birth process itself. You will have a new appreciation for Psalm 139:14, "I praise you, for I am fearfully and wonderfully made. Wonderful are your works; my soul knows it very well".

***Feb 10, 7:00 pm to 8:35 pm. Live Talk: Lies in the Textbooks** with Mark Jurkovich, at Faith Christian Fellowship. Wouldn't you expect our school textbooks to be sure they had their facts straight? Sadly that is often not the case, especially when science text books deal with origins science. This talk points out many of the 'icons' of evolution taught in our school textbooks that have been proven false, but still show up in our texts.

***Mar 9, 7:00 pm to 8:35 pm. Live Talk: "How the World has Changed: The Appearance and Disappearance of Biomes alongside Genesis History"** with Chad Arment, at Faith Christian Fellowship. A look at how habitats (and species) may have changed in the transition from a pre-Flood to post-Flood world.

***April 13, 7:00 pm to 8:35 pm. DVD: Echos of the Jurassic**, with David Rives at Faith Christian Fellowship. The presence of soft tissue and proteins still remaining in dinosaur fossils may be the most significant paleo discovery of the 21st century. The implications are clear: how can 65 million-year-old fossils still retain any tissue or proteins? Can fragile biological material survive for such an extensive period of time? This exciting new documentary explores the history and significance of this incredible discovery, as well as highlighting some of the Creation Research Society's own results from its iDINO project.

***May 11, 7:00 pm to 8:35 pm. Annual ARK Meeting and Election of Officers** with Mark Jurkovich at Faith Christian Fellowship. Come and help us steer the direction of the Ark Foundation's future, and for the election of next years' officers.

Guest speaker at the March ARKY meeting.



Chad lives in Greenville, OH, is a graduate in Biology from Wright State University. He is the owner/publisher of COACHWHIP BOOKS, a print on demand publishing company. ([http://](http://www.coachwhipbooks.com/coachwhip)

www.coachwhipbooks.com/coachwhip) He has written a number of books himself including on the topics of cryptozoology and invertebrate biology. Administrator of the "Creation Museums & Ministries" Facebook group intended to offer support for creation ministries . <https://www.facebook.com/groups/creationmuseums/>



Note Asterisk (*) Indicates regular ARK meeting at Faith Christian Fellowship, 1778 Grange Hall Rd, Beavercreek, OH 45432. Located about a quarter mile north of Dayton-Xenia Road. Ph: (937) 256-ARKY.

The ARK monthly meeting is every 2nd Monday of the month.

Membership NOT required to attend meetings! - Get the latest "CURRENT EVENTS" on the web at <http://www.arky.org>.

Financial Statement 2019

Balance 1/1/19	\$6,702.74
Receipts	
Memberships	
/Newsletters	695.00
Donations	4,547.00
Kroger Promotion	138.85
Maintenance Fund	0.00
Misc	0.00
ARK Speaker Gifts	100.00
Amazon	5.00
Special Events /Banquet	0.00
Reimbursed	73.00
Garage Sales	413.00
Sale of House	56,855.89
Non-Tax Sales	0.00
<hr/>	
Total	62,827.74

Disbursements

Newsletter/CC	0.00
Projects	0.00
Web	270.00
Equipment	0.00
Speaking/Events	200.00
Tithes&Gifts	10,000.00
Reimbursed	0.00
Advertising	0.00
Library	0.00
Improvements	2,745.00
Exhibiting	0.00
Office	226.30
Telephone	882.37
Supplies	55.45
Insurance	1,212.00
Professional Fees	0.00
Misc. (inc. house sale expens- es)	828.48
Utilities	1,517.24
Maintenance	769.88
Lease	1,200.00
<hr/>	
Total	19,906.72

Balance 11/30/19 49,623.76

Is it time for you to renew?

Please check the date on your membership card or above your name and address. If the date has passed or coming up soon, please renew today.

Be an ARK Supporter!

Name: _____
Addr: _____
City, St. ZIP: _____
Ph: _____ - _____ - _____ **Cell :** _____ - _____ - _____
Email: _____
Church: _____
City: _____

Membership Amount : \$ _____

Gift Amount : \$ _____

Total Enclosed: \$ _____

Membership(check one): **One** **Spousal** **Family**

ARK individual membership is only \$25/year (\$30 couple, \$40 family). To receive this newsletter quarterly for free, please complete the address form and put "Jesus" in amount. (Please include mailing label, if you are renewing.) Make checks to: ARK Foundation of Dayton, Inc.

ARK Supporter Benefits

1. **Quarterly newsletter:** ARK members receive news and insightful articles;
2. **Creation Museum Passes:** Several ARK members have made their passes available for use by other ARK members and their guests. FOR FREE;
3. **National support:** 10% of supporters' general donations is given to Answers in Genesis, our voluntary support for a national Biblical creation science organization;
4. **Webpage:** www.arky.org provides logical, Biblical information to a world saturated with an unbiblical, ill-suited naturalism for the needs of people;
5. **Monthly ARK meetings:** interesting speakers or DVD program on a variety of subjects, provided FREE to the community;
6. **Major speaker programs:** sponsored into the area or promoted by ARK;
7. **Local ARK speakers:** available for community and church events;
8. **Encouragement and Answers:** for belief in the Biblical Creator;
9. **Leadership training:** periodically opportunity to learn how to serve in your church or school or study group;
10. **Public materials:** make available Creation resources – books, audios, and DVDs to public;
11. **HELPING US IN PROMOTING THE TRUTH OF SCRIPTURE FROM FIRST VERSE TO THE LAST;** and that true science is consistent with God's Word.



1255 N Fairfield Rd., Box #3, Beavercreek, OH 45432

Lord, You alone are Truth. Help us pass it on.
Your best advertisement is your truth tellers.

PASS ON NEWSLETTER
Email: arkfoundation@arky.org
Web: www.arky.org
Ph: (937) 256-ARKY

RETURN SERVICE REQUESTED

Please Renew Your Subscription Early and save us added expenses!



**Don't forget: New location for
monthly ARK meetings!**

Faith Christian Fellowship
1778 Grange Hall Rd
Beavercreek, OH 45432

About 1/4 mile north of Dayton-Xenia Road

2nd Monday of every month

7:00—8:35 pm

(Thanks to Karen Savage for offering her church, and Pastor Rande Greene for welcoming us in)

<http://fcfdayton.com/>

