

ARKY's News

Volume 22, #1

April—June 2016

Inside this issue:

Grandchildren	1
<i>The Wonder of it All: The Human Body</i>	2
3 Trees	3
<i>Soft-Sediment Deformation: Recent Flood Evidence</i>	4
Obituary	5
Prayer Requests	5
Vice-president Wanted	5
Kroger Rewards Renewal Reminder	6
Kids Korner	7
Financial Statement 2015	7
ARKY's Calendar of Events	8
Financial Statement 2016	9
Membership renewal form and Bookstore info	9
ARKY Banquet Announcement	10

Grandchildren!

by Ronnie E. Cooper

Grandchildren are the rewards of both having children and then not killing them! They are the delights of our life, and then we can go home and leave them with their parents. We can spoil them, adore them, “brag and drag” them to our friends, and we can be accountable, or not. But first we need to have children. Sometimes we also enjoy spoiling or teaching someone else’s children.

Children are a blessing from the Lord, but grandchildren inherent something from all four grandparents: genes and worldviews. We sometimes say they are just like their - dad, mom, pappy, and/or granny. They have their own attitude and aptitude; but we have trained them in our worldview by our words, actions, and inaction. Is it any wonder we feel happiness with their success and sadness with their failures? Families share.

ARKY is a family of supporters with 21 years of experiences with many other families. We don’t exist without building up families. **It’s grandchildren time.** We are accountable now for the third generation from our birth. How many of you can count some blessings because of a Biblical faith supported by what we have done? Many have left the ARKY circle and we have lost contact with you. Others peer in through: the

ARKY.org website, or quietly follow Facebook, or attend events, or help us support the Biblical creation museums, or just drop by for resources on the road or the store; somehow you have stayed connected like the radio listener in a one-way relationship.

In any case, pray for our grandchildren who have received ARKY’s Absolute Real Knowledge message. Pray for your grandchildren. Teach them who God, the Creator is, and what he has done and continues to uphold by His strength and power. There is no higher confidence than knowing our Creator walks with us!

Now how do we focus on doing that? Fear and Love is the Bible answer. Fear God so much you fear nothing else in comparison; Love God with all your Heart, Soul, and Mind – the eternal triad of the image of God. If we teach ourselves how much God loves us, we can show our grandchildren the love of God.

We obey His Commandments, knowing they are given in Love. His Law protects His children to fear hard knock consequences we observe daily in others and the newspaper. By this action we teach more than just in words. Our example reaches to the eternal triad of grandchildren: their hearts, minds, and souls.

We demonstrate the love of God by our actions, our obedience, and our prayers.



Newsletter Editor
Mark Jurkovich

ARK Board Members
Ron Cooper
Jeannie Day
Mark Jurkovich
Sheridan King
Adrian Rose

The Wonder of it All: The Human Body

By Mark Jurkovich

Our own body is truly a marvel of God's loving design. This fact is clearly drawn out in the DVD that was shown at the recent ARKY meeting on March 14th. So today's article will also double as a review of the DVD "The Uniqueness of Man", Featuring Prof. Stuart Burgess; part of the Answers in Genesis Creation Library Series, c2014.

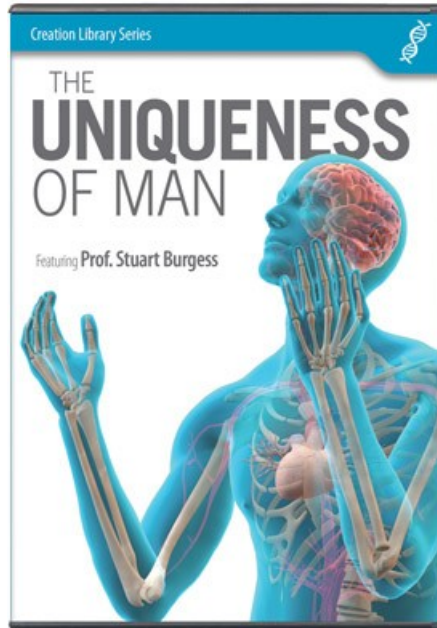
Dr. Burgess started out by declaring "man is a glorious being and brilliantly designed". He pointed out that we are overdesigned (in a positive sense), comparing the human body to a luxury sports car that is designed to go faster than it needs to, is more comfortable than needed, and more beautiful than needed. And in comparison to apes, we are not a mere 5% or even 2% different as some evolutionists claim, but in many respects, **we are 100% different from apes**. The rest of the video went over 10 unique design features of humans, several of which were pointed out as being **100% different from apes**. I will highlight several of these unique design features.

Number one on the list of unique design features is our upright stature. Did you know we are the only mammal that walks upright? And that ability requires unique features literally from head to toe.

- Vertical balance (the vertical one of the 3 canals in the inner ear is uniquely enlarged for upright balance)
- Flat face (so we can see the ground in front of us while walking upright)
- Upright neck joint (enters the skull from underneath; not so in apes)
- S shaped spine (actually better for suspension and cushioning in jumps for example)
- Upright hips, angled femurs, upright knees

and long legs all enable upright standing and walking

- Arched feet (gives us 3 points of contacts for best stability; apes cannot stand on one leg)
 - Strong big toe (further stability and helps enable standing on front of feet and pushing off from front of feet)



All these unique features for upright posture frees up our hands for other uses. So it makes sense that our hands are also a marvel of unique design.

- Our ability to make a pinch grip with our thumb and any of our fingers, and make combined grips
- We have full range of motion from flat hand to clenched fist; apes only have a curve grip
- We have fine muscle control for precise movement
- Fine touch sensors on fingertips
- Precise design of muscles and ligaments for all these abilities listed above
- 25% of our brain's motor cortex is dedicated to muscles in the hand!

An example of overdesign that Dr. Burgess points out is our unique ability to create, sing and perform music. It has no evolutionary benefit. The hand's features enable musicians to play with speed, precision and feeling.

One of the more fun unique designs he points out is our ability for unique facial expressions. Studies say we can make 10,000 different facial expressions! He demonstrates it with a number of great expressions from his son at age 5.

- Facial expressions communicate feelings quickly and enhance other forms of com-

(Continued on page 4)

3 Trees

A Traditional Folktale

Once there were three trees on a hill in the woods. They were discussing their hopes and dreams when the first tree said, "Someday I hope to be a treasure chest. I could be filled with gold, silver and precious gems. I could be decorated with intricate carving and everyone would see the beauty."

Then the second tree said, "Someday I will be a mighty ship. I will take kings and queens across the waters and sail to the corners of the world. Everyone will feel safe in me because of the strength of my hull."

Finally the third tree said, "I want to grow to be the tallest and straightest tree in the forest. People will see me on top of the hill and look up to my branches, and think of the heavens and God and how close to them I am reaching. I will be the greatest tree of all time and people will always remember me."

After a few years of praying that their dreams would come true, a group of woodsmen came upon the trees. When one came to the first tree he said, "This looks like a strong tree, I think I should be able to sell the wood to a carpenter," and he began cutting it down. The tree was happy, because he knew that the carpenter would make him into a treasure chest.

At the second tree the woodsman said, "This looks like a strong tree, I should be able to sell it to the shipyard." The second tree was happy because he knew he was on his way to becoming a mighty ship.

When the woodsmen came upon the third tree, the tree was frightened because he knew that if they cut him down his dreams would not come true. One of the woodsmen said, "I don't need anything special from my tree, so I'll take this one", and he cut it down.

When the first tree arrived at the carpenters, he was made into a feed box for animals. He was then placed in a barn and filled with hay. This was not at all what he had prayed for.

The second tree was cut and made into a small fishing boat. His dreams of being a mighty ship

and carrying kings had come to an end.

The third tree was cut into large pieces and left alone in the dark.

The years went by, and the trees forgot about their dreams. Then one day, a man and woman came to the barn. She gave birth and they placed the baby in the hay in the feed box that was made from the first tree. The man wished that he could have made a crib for the baby, but this manger would have to do. The tree could feel the importance of this event and knew that it had held the greatest treasure of all time.



Years later, a group of men got in the fishing boat made from the second tree. One of them was tired and went to sleep. While they were out on the water, a great storm arose and the tree didn't think it was strong enough to keep the men safe. The men woke the sleeping man, and He stood and said "Peace" and the storm stopped. At this time, the tree knew that it had carried the King of Kings in its boat.

Finally, someone came and got the third tree. It was carried through the streets as the people mocked the man who was carrying it. When they came to a stop, the man was nailed to the tree and raised in the air to die at the top of a hill. When Sunday came, the tree came to realize that it was strong enough to stand at the top of the hill and be as close to God as was possible, because Jesus had been crucified on it.

The moral of this story is that when things don't seem to be going your way, always know that God has a plan for you. If you place your trust in Him, He will give you great gifts. Each of the trees got what they wanted, just not in the way they had imagined. We don't always know what God's plans are for us. We just know that His ways are not our ways, but His ways are always best.

May your day be blessed.
May your road rise to meet you.

Soft-Sediment Deformation: Recent Flood Evidence

by John D. Morris, Ph.D.

Years ago, Dr. Steve Austin and I wrote a technical article on tight folds in sedimentary rock as evidence for recent creation. The original article, which was awarded the best paper at the 1986 International Conference on Creationism, contained two studies, one of which is abridged here. The evidence we presented then is just as relevant today for showing that Earth's geology clearly supports the biblical record.

Introduction

Evolutionists and creationists have different views on the origin of sedimentary rock strata. Evolutionists, who uphold the uniformitarian doctrine of 19th-century geologists, suppose that sediments were deposited slowly over millions of years and then hardened into sedimentary rock. This means that soft sediments, however they accumulated, would surely have lithified (hardened into rock) over excessively long periods of time. However, some of these rocks seem to demonstrate the opposite—these layers were clearly deformed before they had time to lithify.

Creationists who hold the catastrophist doctrine of Scripture propose that most sedimentary strata were deposited rapidly by Noah's Flood. They may have undergone deformation soon thereafter, and the total time span of this process represents only thousands of years.

Stratigraphy

A spectacular exposure of a thick stratigraphic sequence (a group of rock layers) occurs at Split Mountain in Anza-Borrego Desert State Park in eastern San Diego County, California. The layers tilt at 20 degrees to the southwest and can easily be seen while driving by them laterally, with all 17,000 vertical feet in plain view. The sediments in these layers were rapidly deposited by moving water and later exposed by tilting and subsequent erosion.

Tight folds in the strata clearly indicate that the

tertiary sandstone remained in a non-lithified (soft) condition until faulted and folded in the late Pleistocene age several million years after



deposition, according to conventional dating. Yet the conditions were ideal for the sediments to lithify (harden) much more quickly than these dates indicate—deep burial (under thousands of feet of sediment) would have consoli-

(Continued on page 6)

(“The Wonder of It All” - Continued from page 2)

munication

- We have around 50 facial muscles, half of which are dedicated to facial expression; apes have half that many muscles, none of which are dedicated for facial expression
- Another 25% of our brain's motor cortex is dedicated to facial muscles!
- Even the fact that you can see the whites of our eyes is unique; which for example, enables making contact from across a crowded room.

ARKY's CHRISTIAN BOOKSTORE

Questions about Bible trustworthiness, real dinosaur history, flood evidence, where death & suffering started, American history? We have answers!

Books/Bibles/DVDs/CDs/Gifts/Crafts

937-256-2759 <> www.arky.org



2002 S. Smithville Rd
At Wayne Avenue
1 mi. South of US 35

Obituary

Jerusalem 33 AD

Calvary

Jesus Christ, 33, of Nazareth died Wednesday on Mount Calvary, also known as Golgotha, the place of the skull. Betrayed by the Apostle Judas, Jesus Christ was crucified by the Romans, by order of the ruler Pontius Pilate. The causes of death were crucifixion, extreme exhaustion, severe torture, and loss of blood.

Jesus Christ, a descendant of Abraham, was a member of the House of David. He was the son of the late Joseph, a carpenter of Nazareth, and Mary His devoted Mother. Jesus was born in a stable in the city of Bethlehem, Judea. He is survived by His Mother Mary, His brothers/sisters, His faithful Apostles, numerous disciples and many other followers.

Jesus was self-educated and spent most of His adult life working as a teacher. Jesus also occasionally worked as a Medical Doctor and it is reported that He healed many patients. Up until the time of His death Jesus was sharing the Good News. healing the sick, touching the lonely, feeding the hungry, and helping the poor.

Jesus was most noted for telling parables about His Father's Kingdom and performing miracles, such as feeding over 5,000 people with only five loaves of bread and two fish, and healing a man who was born blind. On the day before His death, He held a Last Supper celebrating the Pass-over Feast, at which He foretold His death.

The body was quickly buried in a stone grave donated by Joseph of Arimathea, a loyal friend of the family. By order of Pontius Pilot a boulder rolled in front of His tomb was sealed by Roman seal. Roman/ *Temple* soldiers were put on guard.

In lieu of flowers the family has requested that everyone try to live as Jesus did. Donations may be sent to anyone in need.

(writer unknown)

Prayer Requests

Please be in prayer for the ministry of the Ark Foundation.

- For the raising up of someone to become Vice President of the Ark Foundation
- For direction for Ark Foundation's future
- For the Lord's hand on the development of the new web site.
- For revival in our land
- That Ark Foundation be used in strengthening believers and drawing unbelievers to the Lord
- For Ron and Brenda as they travel to many Christian venues on behalf of ARK
- New church contacts
- More believers learn about and take advantage of Ark's resources
- Open up opportunities/locations for presenting seminars and traveling presentations
- More volunteers, financial partners, and prayer partners.
- For each other: that we grow in our love for the Lord and desire to see others come to know His love.

WANTED

SOMEONE WILLING TO BE VICE PRESIDENT STARTING IN MAY 2016.

PREFER TO HAVE MULTIPLE CANDIDATES TO SHARE GOALS AND BUILD LEADERSHIP TEAM.

MUST HAVE BASIC COMPUTER SKILLS AND WILLING TO LEARN MORE.

NEED TO BE WILLING TO BECOME PRESIDENT IN 2 - 5 YEARS.

QUESTIONS - CALL RON
937-256-2759.

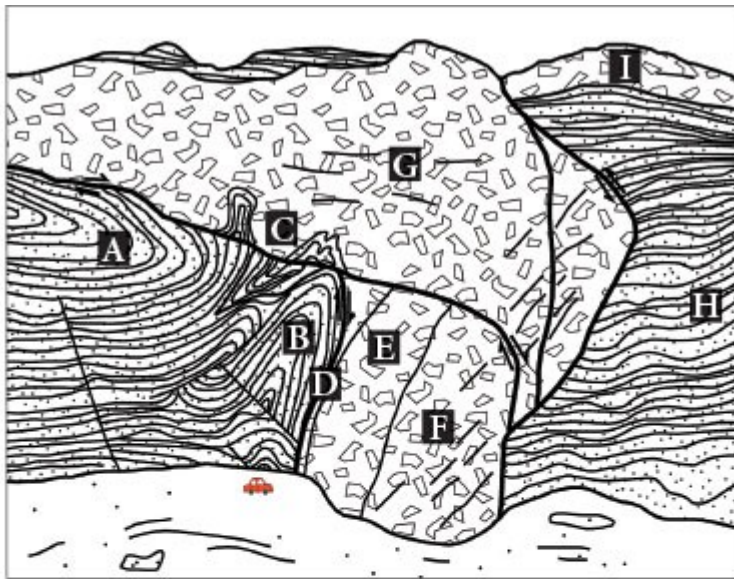
(Soft sediment - Continued from page 4)

dated the grains and provided a proper cement to bind them together. The fold geometry clearly indicates the strata were still in a soft, unlithified condition at the time of deformation! This leads to the conclusion that deformation and subsequent hardening could not have happened as long ago as millions of years.

Evolutionists have failed to explain how millions of years could have passed while allowing this sedimentary sequence to escape lithification and remain in a soft state, despite deep burial. To justify the passing of so much time, they believe that the sediments were first lithified and then were tightly folded later. They claim that, when deeply buried, rocks can slowly deform extensively. But there is a limit to how much solid rock, notoriously weak under tension, can bend without breaking. And the outer half of each layer would undergo tension at every single bend, leading to breakage. As illustrated in the accompanying sketch and photograph, although these layers were bent excessively, there is no evidence of broken cement grains. Instead, it appears the strata flowed as mud or deformed plastically. All of this leads to the better interpretation that the Split Mountain formation deformed while still soft in a bending "event" rather than slow "creep." It is clear that the vast ages assigned to the strata are mere assumptions and that the uniformitarian interpretation of the de-

formation is incorrect. The following images and captions explain what really happened.

Evidence for Soft-Sediment Deformation



Sketch of the east side of Split Mountain Gorge looking at the west side's cliff and slope, which shows numerous soft-sediment deformation features. Zones labeled by letter are explained below. The automobile at the base of the cliff provides scale, and its position matches that of the Jeep in the photo. The concave-upward nature of the lowest fault surface (shown as a bold line between areas labeled A, B, C) implies that the hanging wall (upper side of the fault) became physically separated from the footwall (lower side of the fault) when about 400 feet of vertical slip occurred on the fault. This gap, or mismatch, produced a trench-like hole into which overlying material fell or flowed.

The conventional dating assigned to the lowest Pliocene, marine sandstone of the Split Mountain Formation assumes an age of several million years. The age assigned to the soft-sediment deformation is middle or late Pleistocene—within the last million years. This dating system assumes that sediments, in a state of deep burial, stayed soft and pliable for millions of years or that the hard, brittle rocks bent with virtually no breaking or cracking! The rocks, however, tell us a different story—one in which the recent global Flood laid down immense deposits of sediments in a short amount of time. Soon after, the subsequent folding of these sediments, while they were still unlithified, produced the

dramatic deformation we observe today. God's hand was in the Flood event...the rocks bear witness to this cataclysm and still speak to us today.

See full article at: [Soft-Sediment Deformation: Recent Flood Evidence](#). Acts & Facts. 42 (10)., 2013.

Did YOU renew your Kroger Rewards Program?

Everyone MUST reregister EVERY APRIL. Not yet using **Kroger Rewards** program? Just register/re-register your Kroger Plus card at "**KROGER.COM**" and we automatically get credited when you use it. Select "**The ARK Foundation of Dayton, Inc**" (organization # 81517) when you register.

Kids Korner

Hey, kids, TJ here. If you have a favorite Bible character or person of interest, who would it be? Adam, Eve, Abraham, Sarah, Jacob or any of his 12 sons? How about New Testament people like Paul, Timothy, Mary, the mother of Jesus, John the Baptist, his mother, Elizabeth, or even Jesus? Who is the most interesting to you or someone that you're very curious about? Ok, I gotta tell ya that all of them greatly interest me. I want to know more about them and how they came to know God. We get to read about them, but their knowledge about God would be a bit different than our knowledge, which includes the Old and New Testaments! Then, there's the Apocrypha, the Canon, and other writings that came about long after these great men and women of God had died and gone to heaven, literally looking at the face of God! So, as we read about people who have given us insights on how to live, how to deal with bullies, and how to honor God, let's keep in mind that we have more information than they did. That doesn't mean our walk with God is better than theirs. It all depends on how personal our relationship with the Lord is. We need to read about these key people in God's Word, learn from their lives, and pray and seek God daily. He says, "when you seek Me, you will find Me." (See Jeremiah 29:12,13; Matthew 6:33; 7:7,8.)

It's simple, kids. Keep it simple and innocent when it comes to seeking God, knowing Him, and serving Him. Not only is that a good thing, it's what God wants for all of us. It's a good thing, a God thing, a you thing and a me thing.



(far from accurate, but still funny.)

Financial Statement 2015

General Fund	
Balance 1/1/15	\$6,542.47
Receipts	
Memberships/Newsletters	1810.00
Donations	3.00
Speaker Gifts	0.00
Projects	0.00
Special Events /Banquet	0.00
Equipment Sold	5.40
Kroger Gift Cards/Promotion	259.29
Reimbursed	13.83
Misc	5.00
Non-Tax Sales	1,894.99
Taxable Sales	10,348.03
Sales tax collected	745.67
Loan Proceeds	0.00
Total	21,537.68
Disbursements	
Newsletter/CC	196.00
Projects	28.22
Office	344.43
Telephone	775.37
Children's Ministry	0.00
Exhibiting	2,321.95
Web	794.00
Inventory	8,071.12
Equipment	373.99
Supplies	311.19
Insurance	1,983.00
Professional Fees	626.11
Sales Tax Paid	843.37
Speaking/Events	0.00
Misc.	295.00
Tithes&Gifts	200.00
Reimbursed	0.00
Total	17,164.28
Balance 12/31/15	4,373.40
Building Fund	
Balance 1/1/15	-4,175.98
Matching Mortgage Fund	5,654.69
Donations	6,051.69
Total	23,781.85
Expenses	
Mortgage	10.14
Building	263.39
Utilities	2,575.04
Real Estate Taxes	0.00
Matching Fund	3,689.32
Repairs	0.00
Advertizing	110.00
Total Bld. Expenses	6,647.89
Balance 12/31/15	881.85

ARKY's Calendar of Events **(as of 3/31/16)**

See more details and complete list at
<http://www.arky.org/current/index.htm>

***Apr 10**, 1:00 pm to Apr 16, 5:00 pm. **National Volunteer Recognition Week (TU, TH, SA)** with ARKY Volunteers at ARKY's House. Any gift items 50% off for our volunteers. Want to be a volunteer, let us know @ 937-256-2759.

***Apr 11**, 7:00 pm to 8:35 pm. **DVD, Agenda 2: Masters of Deceit** with Curtis Bowers at ARKY's House. People were overwhelmed by the seeming myriad of issues they were facing. From the promotion of Islam to the propaganda of climate change, from the deceit of Common Core to the manufactured economic crisis, and from the manipulation of the Evangelical Church to the unsustainable debt burden. It seems as if America had a hundred different enemies with a hundred different agendas. But from previous research that wasn't the case. This exposes the Masters of Deceit and their purposeful, premediated, treasonous attacks on our freedom. The issue is never the issue. The issue is always the revolution.

Apr 29, 8:00 am to **Apr 30**, 6:00 pm. **IAHE Convention** with Speakers at Indiana State Fairgrounds, 1202 E 38th St, Indianapolis, IN. Ph: (317) 467-6244.

Apr 30, 1:00 pm to 5:00 pm. **National Bookstore Saturday** with Customers at ARKY's House. -- Lots of books reduced 20%, 30%, 40% or 50%

May 5, 12:00 am to all day. National Day of Prayer with Believers at Your House. See WFCJ website (<http://www.wfcj.com/events/>) for activities.

***May 9**, 7:00 pm to 8:35 pm. Annual **business meeting** and election of Directors with DVD TBD if time allows at ARKY's House. We need a quorum of active paid up members attending for a valid election. Please renew your membership and attend this business meeting and next month's annual banquet.

***Jun 13**, 6:00 pm to 8:35 pm. **ARK Annual Banquet - #21** with Dr Terry Mortenson at MCL Cafeteria Kettering, 4485 Far Hills Ave (see information on page 10).

***Jul 11**, 7:00 pm to 8:35 pm. **DVD: Made In His Image** Set from ICR with Guliuzza, Dr Randy and Others at ARKY's House. Series on the complexi-

ties of the human body. Featuring medical, engineering, and other experts. This will fascinate audiences with mind blowing facts, dazzling imagery, and unforgettable illustrations. Episodes: The Miracle of Birth, The Marvel of Eyes, Uniquely Human Hands, Beauty in Motion, four DVD set. Includes Viewer Guide.

***Aug 8**, 7:00 pm to 8:35 pm. **DVD: Our Created Universe** with Spike Psarris at ARKY's House. What You Aren't Being Told About Astronomy, Volume 3: Our Universe: What is its origin? Did it form in a Big Bang event billions of years ago? Or are the heavens consistent with the Biblical account of creation instead? The Big Bang is a popular creation myth within western culture today. Not only is there abundant scientific evidence against the Big Bang, the model contradicts itself, and has absurd implications. An objective evaluation of the evidence does not support a self-creation of the cosmos; instead, the heavens declare the glory of God.

***Sep 12**, 7:00 pm to 8:35 pm. **DVD: Our Created Stars and Galaxies** with Spike Psarris at ARKY's House. What You Aren't Being Told About Astronomy, Volume 2. We live in a Universe of overwhelming size and beauty. It contains about 100 billion galaxies, each of which contains about 100 billion stars. Did you know that according to the secular model, none of them should exist? In this video, you'll see how recent discoveries contradict the naturalistic view of history. You'll hear the words of secular astronomers, as they admit that their models fail to explain the contents of the Universe. You'll discover evidence for design in the heavenly bodies. The Bible tells us that God created the heavens for His own purposes. Viewing the Universe in light of Scripture gives us tremendous insight into His majesty, His character, and what He has done for us. Discover how stars and galaxies proclaim the glory of their Creator!

Note Asterisk (*) Indicates regular ARK meeting at ARKY's House, 2002 S Smithville Rd, Dayton, OH. One mile South of US 35, just past Wayne Ave. Park on side. Ph: (937) 256-ARKY.

The ARK monthly meeting is every 2nd Monday of the month. The ARK bookstore is open 30 minutes before and after the meeting.

Membership NOT required to attend meetings! - Get the latest "CURRENT EVENTS" on the web at <http://www.arky.org>.

Financial Statement 2016

Balance 1/1/16	\$5,255.25
Receipts	
Memberships	220.00
Donations	0.00
Kroger Promotion	0.00
Maintenance Fund	218.24
Misc	2.00
ARK Speaker Gifts	0.00
Projects	0.00
Special Events /Banquet	0.00
Equipment Sold	0.00
Reimbursed	0.00
Non-Tax Sales	313.91
Taxable Sales	799.15
Sales tax collected	57.94
Total	1,611.24

Disbursements

Newsletter	49.00
Projects	0.00
Web	0.00
Equipment	0.00
Speaking/Events	0.00
Tithes&Gifts	0.00
Reimbursed	0.00
Advertising	0.00
Library	0.00
Improvements	0.00
Exhibiting	425.00
Inventory	1,007.39
Sales Tax Paid	372.94
Office	64.67
Telephone	88.86
Supplies	0.00
Insurance	510.00
Professional Fees	51.31
Misc.	53.62
Utilities	505.10
Maintenance	99.00
Total	3,226.81
Balance 2/29/16	3,639.68

ARK Supporter Benefits

- 30% discount:** minimum on all purchases;
- Quarterly newsletter:** ARK members receive news and expansion plans;
- National support:** 10% of supporters' general donations is given to Answers in Genesis, our voluntary support for a national Biblical creation science organization;
- Webpage:** www.arky.org provides logical, Biblical information to a world saturated with an unbiblical, ill-suited naturalism for the needs of people;
- Monthly ARK meetings:** interesting speakers or DVD program on a variety of subjects, provided FREE to the community;
- Major speaker programs:** sponsored into the area or promoted by ARK;
- Local ARK speakers:** available for community and church events;
- Encouragement and Answers:** for belief in the Biblical Creator;
- Leadership training:** periodically opportunity to learn how to serve in your church or school or study group;
- Public materials:** make available Creation resources – books, audios, and DVDs to public;
- Lending library:** by mail or at ARKY house for supporters;
- Bookstore available:** during regular hours and by appointment;

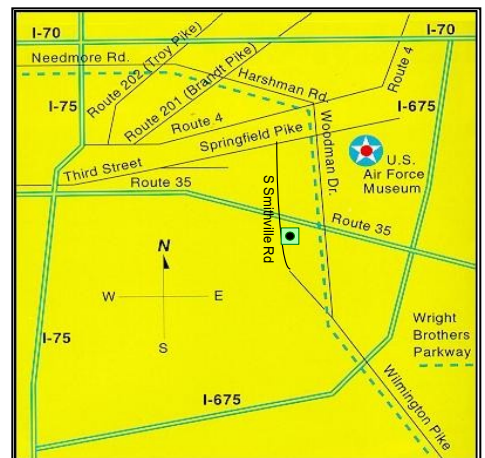
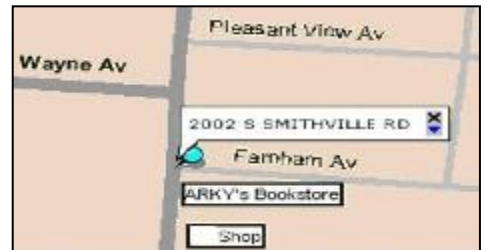
13. **Bookstore honors specials:** when offered by AiG, ICR, and WallBuilder if items are in stock.

Is it time for you to renew?

Please check the date above your name and address. If the date has past or coming up soon, please renew today.

Be an ARK Supporter!

Name: _____
 Addr: _____
 City, ST ZIP: _____
 Ph: ____ - ____ - _____ Work: ____ - ____
 Email: _____
 Church: _____
 City/Zip: _____
 Membership Amount : \$ _____
 Gift Amount : \$ _____
 Total Enclosed: \$ _____
 Building Pledge: \$ _____ per _____
 Membership: One Spousal Family
ARK individual membership is only \$25/year (\$30 couple, \$40 family). To receive this newsletter quarterly for free, please complete the address form and put "Jesus" in amount. (Please include mailing label, if you are renewing.)





2002 S Smithville Rd, Dayton, OH 45420-2804 Ph: (937) 256-ARKY

Lord, You alone are Truth. Help us pass it on.
Your best advertisement is your truth tellers.

PASS ON NEWSLETTER

Email: arkfoundation@arky.org

Web: www.arky.org

RETURN SERVICE REQUESTED

Please Renew Your Subscription Early and save us added expenses!



21st Annual ARK Banquet
with Dr Terry Mortenson
of Answers in Genesis

Jun 13, 6:00 pm to 8:35 pm

MCL Cafeteria Kettering, 4485 Far Hills Ave
(just north of David Rd, 937-299-6605),

On the eve of the opening of the new Ark Encounter Museum, Answers in Genesis Speaker Dr Mortenson will speak on **"Millions of Years: Where Did the Idea Come From?"** This is a timely reminder of why there was an Ark and what were the many consequences for the earth and our spiritual faith.

Eat ala carte from the food line.

Program starts at 7:00 and
speaker at 7:20 pm.

**A donation will be requested to benefit
ARK and ARK Encounter.**

For more information call (937) 256-ARKY.

