

ARKY's News

Volume 21, #1

Apr—Jun 2015

Inside this issue:

<i>The Original True</i>	1
<i>The Wonder of it All: Birth</i>	2
<i>ARKY News</i>	3
<i>Holocaust Museum Trip</i>	4
<i>Annual ARK Meeting</i>	4
<i>Interview with Dr. Jonathan Sarfati</i>	5
<i>Kroger Rewards Renewal Notice</i>	6
<i>Kids Korner</i>	7
<i>ARKY's Calendar of Events</i>	8
<i>Financial Statement</i>	9
<i>Membership renewal form and Bookstore info</i>	9
<i>Annual ARK Banquet with Dr. Jonathan Sarfati</i>	10



Newsletter Editor
Mark Jurkovich

ARK Board Members
Ron Cooper
Jeannie Day
James Johnson
Mark Jurkovich
Adrian Rose

Beginning: Is the Original True

By Ron Cooper

Sources like the Original may be worn out or forgotten. I know I would like some original stories to be true and some to be false. It is a matter of what I like. I don't like killing, but I do like fried Chicken. I don't like fables, but I do like understandable stories. I don't like lies, but can I accept truth and know the difference. What then are the best originals? Have they changed or have we?

I want us to focus on some simple original sources, Truth and Language.

First consider Genesis and the Old Testament, as the source of Truth for the New Testament, together with the Alpha and Omega, the Word of God. From Creator to Promise Keeper to Law Giver to Gentle Master to Suffering Savior to Redeemer to Judge to Loving Master, all are parts of the history of God and Mankind.

Second consider language, confused and varied as it is, still conveys the original message in a simple form: God created all things Good; Mankind chooses Sin over God as a natural product of choice; this separates us from God; God still desires mankind to worship Him so He (God) paid the price for Sin; everyone in Mankind can choose this payment and be-

come adopted children of God forever; then they can live in gratitude to God and service to each other.

In order to understand language we require a dictionary as close to original definitions to the writing or language we need to understand. For American English that means Webster's 1828 first edition, "American Dictionary of the English Language." It is still in print and available from ARKY's.

Two very important documents needing unchanging definitions are the Bible and the US Constitution. The Bible gets revised as our language changes. How well we understand and can agree with its honesty depends on how we use our dictionary. For the 1611 KJV, the 1828 original Webster's is needed. Two simple examples are kill and marriage. Kill in 1611 means what we call murder today. Marriage means husband and wife for life. Today the term is wrongly being redefined as a contract or something that changes because we are allowing the definition to "evolve." That is the intended purpose in a "Godless" society.

So today we are having many

(Continued on page 4)

The Wonder of it All: The Miracle of Birth

By Mark Jurkovich

How often have you heard someone say, or even said yourself, “what a little miracle” when you see a newborn baby. And truly every baby is a miracle. But now medicine has figured out some of the amazing, process that take place so a baby can safely go from living in a liquid environment to an air breathing environment. It shows how truly wondrous God is.

Virtually all my information in this article comes from a recent article by Dr. Randy Guliuzza in Acts and Facts titled “Made in His Image: Baby’s First Breath” (vol. 44 #3, March 2015). When I read it, I was truly awe struck at the amazing intricacies of God’s design for childbirth.

So how does a baby manage to get oxygen and not drown in amniotic fluid while in the womb? Then how does he successfully take that first breath? Many of you may already know that the placenta serves as the substitute lung among other vital functions for the baby. But other things are needed inside the baby to make this temporary oxygen source work. Once inside the baby, there is a temporary vein and two arteries, connecting between the umbilical chord to normal vessels leading to and from the heart. And a bypass is setup in the heart so only a small amount travels to the lungs.

Now when the blood from the temporary vein merges in with the vein going to the heart, the two flows tend to not mix, and go in two different directions when they reach the heart! God designed a temporary one way valve between the left and right chambers of the heart. The

stream from the placenta, with the higher oxygen level, takes this opening to the other side of the heart and is then pumped to the rest of the body.

So with this beautifully designed system to let the baby grow in the womb, how is the transition made to the outside world? First the umbilical cord is specially designed to react to the birth by contracting its strong muscle, thus stopping the blood flow between placenta and baby. Second, decreased skin temperature (by exposure to the air) and increased carbon dioxide levels triggers an irresistible urge for the baby to take a strong first breath. A special compound in the

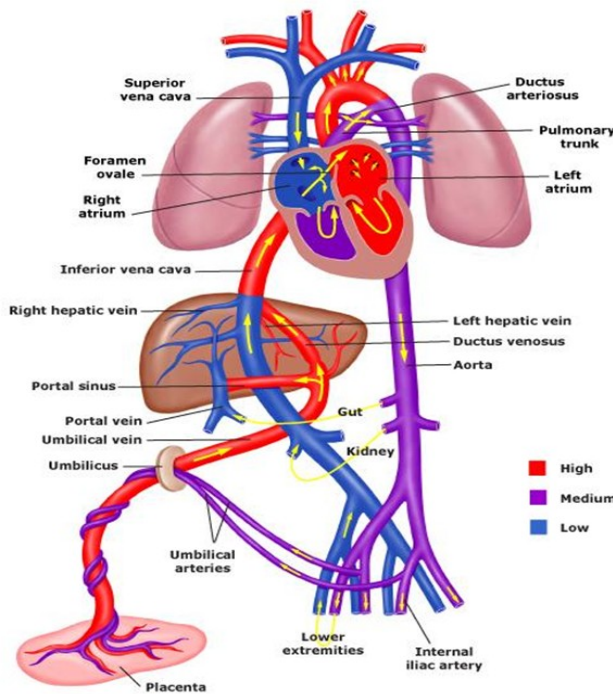
lungs makes it possible for the lungs to inflate for the first time. The opening of the lungs results in a pressure change between the two sides of the heart, so the side that was higher in pressure is now lower. This causes the temporary one way valve to close, no longer needed. Special muscles even close off the temporary blood vessels.

Dr. Guliuzza summarizes it best: “Given that a transplanted heart living inside

someone is truly an incredible achievement—at what level of accomplishment is getting a whole person to live inside another person? Absolutely incredible—which is what the Lord Jesus Christ is! As clearly seen, He creates, directs, provides, and cares—indeed, everything He does is beautiful beyond description.”

Read Randy’s full article at <http://www.icr.org/article/8642>

Image credit: <http://pixgood.com/fetal-circulation-pathway-diagram.html>



Fetal Circulatory System

ARKY News

Mortgage Paid Off! - ARK has received its "Satisfaction of Open End Mortgage", effective 2/11/2015 – It is paid in full. It's not a mortgage burning – It's a Mortgage Satisfaction. It sounds less dramatic, but it's a true end to those payments. The payments started on 4/15/2003 with a debt of \$64,046.56 after a down payment of \$13,259.20 on our \$75,000.00 offer and other closing costs. Eleven years and 10 months to finish our most important capital investment, the headquarters for ARK and ARKY's Bookstore. Perhaps it is now in order to establish where we plan to go from here using our resources for ministry.

The most visible part of our ministry is our **bookstore and our web site**, www.arky.org. The working warehouse/store on Smithville has operated more as a warehouse than a store. It does not pay for itself from sales in the store. But the store has seen sales improvements in the past year because people who do not frequent a Christian Bookstore are finding their favorite is closed and they are searching and finding us via word of mouth, internet, and phone book. As a warehouse, it is far better than our basement or garage to load and unload for events. We take the inventory where people will buy. Each event in a convention center costs about \$500-\$900 plus inventory. If we do not breakeven, we stop the event. Most home school events have been stopped. The website is information intense, but does not sell much since it is a manual order form processing. Updating would require several hundred dollars, but could result in very good sales and more promotion of the web site.

We have signed up for two web buying donation programs based on sales usage: www.GoodSearch.com and www.AmazonSmile.com. We have received one small check from *GoodSearch* which gives a penny for each time it is used for a search by a registered person designating us. We recently signed up with *AmazonSmile* but it is too soon for results yet.

Krogers Rewards currently has 14 participants (names not reported to us) and gener-

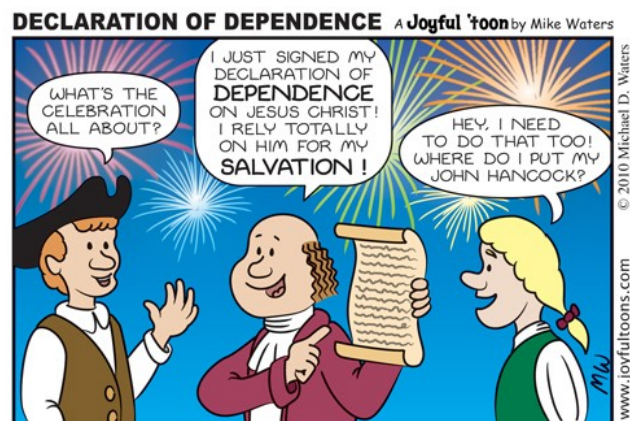
ates about \$300/year. **Everyone MUST re-register EVERY April under Kroger's current program on the internet.** Its maximum quarterly return was \$312.87 when more people were signed up. Current is \$81.47 with only 14 participants. I encourage participation and will contact people personally who we knew were signed up in the past. Each person must re-new **every April.**

Active supporting families are now 85. Increasing active support will be a priority of my time this year. Everyone is on a one year renewal cycle.

Facility improvements are now on our radar with the property paid for. Electrical capacity needs to go to 200 Amps and more circuits added. An outside lighted sign is desired with controls inside. At least one 30 Amp trailer outlet outside will solve several issues for effective trailer usage. Continued Air Conditioning improvements and insulation will allow better usage as a classroom for courses we can teach.

Facility usage can be increased with a reasonable number of recruited teaching volunteers. Each can be given opportunities when they are ready. Additional store help will take more off Ron. Good people are the heart of long term success. We have no employees, but can reimburse expenses. We could contract out defined tasks/functions, if we have the funding.

What classes would you be interested in taking? Sample studies are: Bible, Origins, Government.



My salvation and my honor depend on God;
he is my mighty rock, my refuge.

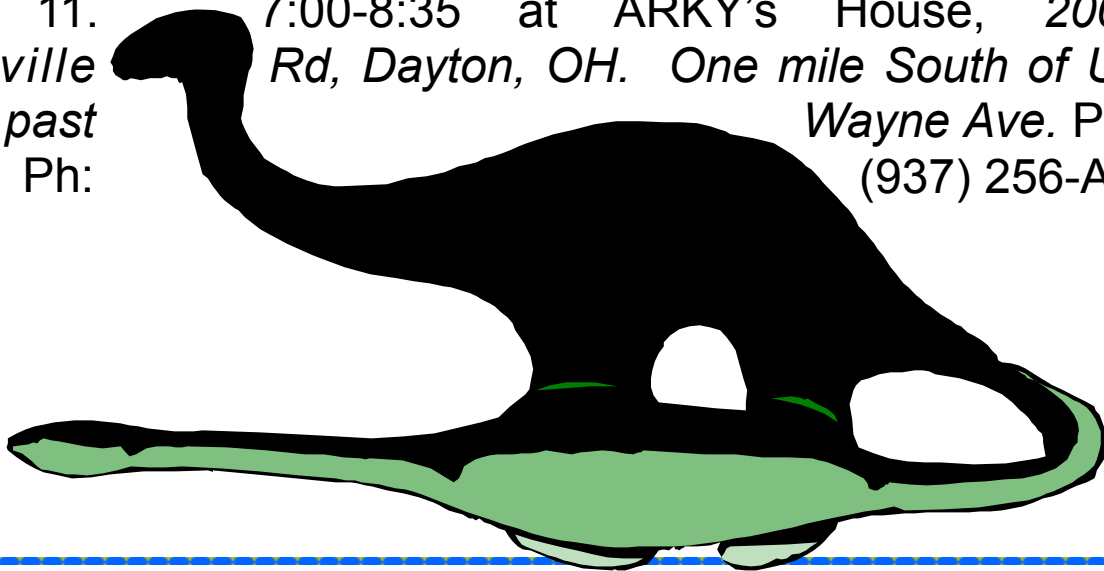
— PSALM 62:7 NIV

ARKY Annual Meeting

WE NEED YOU!

Please attend the annual ARK meeting on May 11. Your input is highly valued. Shall we head new directions now that the mortgage is paid off? Come help us decide. And PRAY for the Lord's direction for ARK.

May 11. 7:00-8:35 at ARKY's House, 2002 S
Smithville Rd, Dayton, OH. One mile South of US 35,
just past Wayne Ave. Park on
side. Ph: (937) 256-ARKY.



("Beginning" - Continued from page 1)

Terre Haute Indiana Trip

Visit the **Candles Holocaust Museum** and Education Center. This is the only Holocaust museum in this region. Let us make it easy for you! Help fill our 15 passenger van. Learn about History, Respect, Empowerment, Tikkun Olam (a Hebrew phrase meaning "repair the world"). A trip to the museum is a unique and unforgettable experience: A trip back in time to witness the Holocaust; A trip into the future to envision a world free from prejudice and hatred. Contact us at 937-256-2759 with suggested dates and how many going. Normal docent hours, 1-4 pm, Tuesday thru Saturday. Because of the complexity of the subject matter, suggest no younger than 5th grade. \$5.00 each admission. For more information: <http://www.candlesholocaustmuseum.org/>.

new beginnings. The original meanings are lost in a sea of intended ignorance and political talk. Such talk is half truths you get to choose your truth from, but you don't get permanent truth.

Now we come to the need for regional organizations like ARK – to promote Absolute Real Knowledge, the "Truth" as found in documented history. Not things based on half truths or personal truths nor corrupted truth, but Truth as defined by the Creator, Jesus Christ. If you would like to know how we can believe this, please contact us or look at resources at www.arky.org. We would be happy to explain this good news. It depends on when you find the true beginning and begin again yourself.

For consequences see NY Times article "Why Our Children Don't Think There Are Moral Facts", By JUSTIN P. MCBRAYER, March 2, 2015. Compliments of Common Core!

Interview with Dr. Jonathan Sarfati

By Gary Bates

To help whet your appetite for our upcoming banquet speaker, an interview with him is excerpted here. To read the full interview, go to

<http://creation.com/an-awesome-mind-creation-magazine-jonathan-sarfati-interview>

Very few people interested in creation/evolution issues would not have heard of Jonathan Sarfati. His books have become best-sellers—standard fare for Christians wishing to engage those who hold to evolutionary/long-age ideas. One of the reasons they have become such a powerful tool for Christianity is the amazing flow of his clear, crisp trademark logic, which has ‘skewered’ and silenced many an evolutionary detractor.

Christianity makes sense

Interestingly, it was logical reasoning, not an emotional need or life crisis, that led Jonathan to become a Christian. While studying at Victoria University of Wellington, New Zealand, some Christians befriended him. This caused him to investigate the claims of Christianity, which he found logical and entirely defensible. This ultimately led to his conversion at age 20. However, he still had much to learn in the field of apologetics, or logically defending the faith. He and a group of like-minded Christians, seeing the need for Christians to be prepared to give reasons for their faith (1 Peter 3:15), co-founded the Wellington Christian Apologetics Society.

Early in his Christian walk, he experienced many ‘Christian compromisers’ (as he calls them) who said the creation vs. evolution debate was a side-issue. Logically, Jonathan realized that if the Genesis account of the entrance of sin and death into God’s perfect world was not real history, then it eradicated the very reason why Christ (the God-man) had to come to earth to save mankind from the penalty their sin justly demanded.

‘Sarfati’ means ‘Frenchman’ in Hebrew. Despite having no religious upbringing, Jonathan was driven to investigate his Jewish roots after

his conversion. As a Messianic Jew, he has also passionately imbibed knowledge about church history and theological issues. This has helped make him one of the world’s most powerful defenders of the authority of the Bible.

People who meet Jonathan are left in no doubt that he has little time for those he feels distort, and therefore damage, the integrity of the Word of God. This led him to approach Dr. Carl Wieland (joint CEO of CMI) to work for the ministry. Jonathan remarks, ‘I saw CMI at the cutting edge of this war, and I wanted to be part of the battle.’

Carl recalls that time: ‘It always gets my attention when Ph.D. scientists offer their services to the ministry, considering they could often earn a substantial income in their specialist fields. But normally, I would be more cautious. For example, giving time for someone to immerse themselves even more fully in cutting-edge creation literature. However, after a very brief interaction with Jonathan, I was immensely keen to hire him. Here was someone the Lord had blessed with a brilliant mind like a steel trap, and with a burning passion for what we were doing. I had no doubt that he would quickly do what he did, which was to devour everything worthwhile ever written on creation, and surge ahead of the pack.’

Carl shared a typical example of Jonathan’s amazing abilities. Reviewing a layman’s article recently submitted by an expert on relativity, Jonathan circled a number which ‘had to be wrong’. To explain why, he had attached photocopied pages, containing one of the classic equations of relativity, from a book, Einstein’s Universe. Half-apologetically, Jonathan murmured, ‘This equation stuck in my mind since reading the book.’ Not recognizing the title from CMI’s research library, Carl asked where he had obtained it. ‘It was given to me on my birthday’, was the reply. Which one? His fifteenth. His c. 25-year recall of an equation outside his specialist field instantly told him the article’s number was a ‘typo’!

But prick him and he does bleed. In fact, one of the things that genuinely upsets him is see-

(Continued on page 6)

(Interview - Continued from page 5)

ing Christians 'twisting' Scripture. It would be fair to say that he has more intellectual respect for an 'out and out' atheist than for someone who reinterprets God's Word away from its intended meaning.

I now regard 'Jono' (as he has become affectionately known) as a friend as well as a colleague. But before I joined CMI full-time, my own introduction to him was via email contact and from reading his Refuting Evolution. I can remember almost being in a state of disbelief at the man's recall of information and his 'take-no-prisoners' style of writing. He has mellowed somewhat, and his approach overall is not without a measure of grace. This was demonstrated recently when he answered some criticisms from a homosexual man in the feedback section of the CMI website, for which he received many positives for his sensitivity.

Going 'Jono' on evolution

Many detractors still quote the old canard 'No real scientist believes in creation.' But Jonathan definitely fits the description of a real scientist, and a brilliant one at that. He has published in a number of secular journals, including co-authoring a paper in the major journal Nature when only 22 years old.

His first book for CMI quickly became a landmark publication (about 450,000 copies and still growing, and is our best-selling book ever). Refuting Evolution was a response to the aggressive action of the National Academy of Sciences in America [free chapter study guides are [available from this site here](#)]. Convinced that creation was gaining a foothold,

they produced a handbook of the 'latest and greatest' evidences for evolution. Called Teaching About Evolution and the Nature of Science, it was distributed free to over 100,000 US science teachers.

Jonathan's response systematically demolished their arguments. He believes that it is a Christian's duty to destroy any fallacies that have the potential to lead people astray. One of his favourite Bible passages is 2 Corinthians 10:5: 'We demolish arguments and every pretension that sets itself up against the knowledge of God, and we take captive every thought to make it obedient to Christ.'

Some years ago, while in America, Jonathan was asked to produce a response to the multi-million-dollar PBS/Nova television series, Evolution. This was backed by prominent evolutionary humanists who invested millions, and launched with much hype and fanfare. Rabidly anticreationist groups like the National Center for Science Education even had the audacity to entice Christians to accept the ideas presented in the programs by producing a free 'church study guide'. It was clear they were on the attack, their weapons aimed right at the very foundations of the Christian faith. So after each evening broadcast Jonathan worked into the early morning hours producing a comprehensive critique, which appeared on the CMI website later that morning. His collection of responses to each episode of the series eventually formed a major part of Refuting Evolution 2. (go to the link at the beginning of this article to read the rest)

ARKY'S CHRISTIAN BOOKSTORE

Questions about Bible trustworthiness, real dinosaur history, flood evidence, where death & suffering started, American history? We have answers!

Books/Bibles/DVDs/CDs/Gifts/Crafts

937-256-2759 <> www.arky.org



2002 S. Smithville Rd
At Wayne Avenue
1 mi. South of US 35

Time to renew your Kroger Rewards Program.

Everyone MUST reregister EVERY April. Not yet using **Kroger Rewards** program? Just register/re-register your Kroger Plus card at "**KROGER.COM**" and we automatically get credited when you use it. Select "**The ARK Foundation of Dayton, Inc**" (organization # 81517) when you register.

Kids Korner

The Ultimate Super Hero

Hey, kids, TJ here with an amazing discovery about a Super Hero. Ok, first, I have to tell you that I like Super Heroes. Yep, they're the 'Good Guys' fighting crime, and they almost always win the battle. They seem to have extra ways, or super powers, to defeat the enemy. I love that part because I'm always thinking that if I had super powers I would want to crush every bad person out there and eliminate crime altogether. It would be such an awesome, peaceful place to live then, right? We wouldn't have to lock our doors (kinda like the old days), and we wouldn't have to worry about our neighbors being weird. So, why doesn't God just create a bunch of Super Heroes to cleanse the world from all the bad people? I mean, if I was in charge, I'd... Wait! It's a good thing I'm not in charge, nor you for that matter, because, to be honest, I might wipe out some really bad dude, who later on in life would turn his life over to Jesus and then start doing good! So, how would I know that? Well, truth is, I wouldn't know because I can't see into the future, or know someone's heart, like God does. Actually, HE IS THE REAL

SUPER HERO!

Psalm 59:7 says, "To You, O my Strength...,"
"God is my defense, my God of mercy."

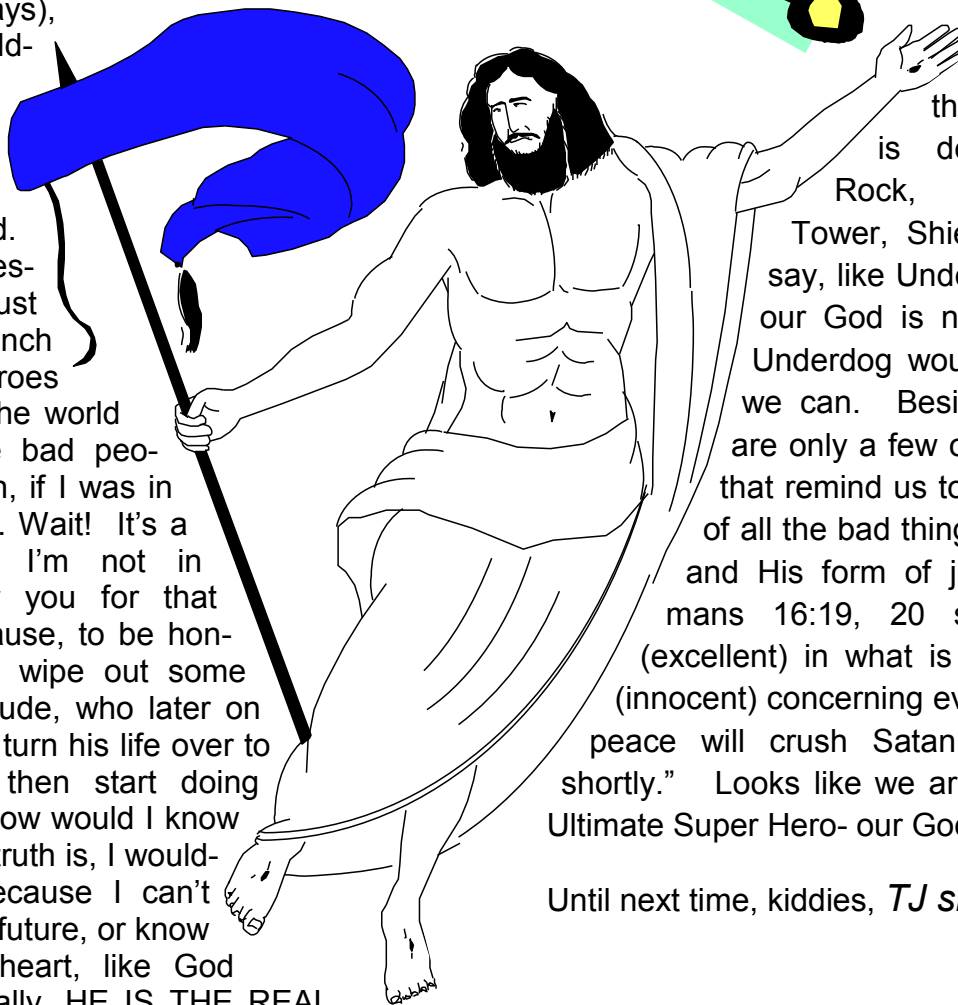
Psalm 60:12 says, "For it is He
who shall tread down our
enemies."

Psalm 62:2
says, "He
only is my
rock and
my salva-
tion; He is my
defense; I
shall not be
greatly moved."

Psalm 62:11 says
that, "power belongs
to God."

Wow! I see over and over again in the Word how God is described as our Rock, Defense, Strong Tower, Shield, etc. We can say, like Underdog, "Never fear, our God is near!" OK, maybe Underdog wouldn't say that, but we can. Besides, these verses are only a few of the many verses that remind us to let God take care of all the bad things and to trust Him and His form of justice. Also, Romans 16:19, 20 says, "...be wise (excellent) in what is good, and simple (innocent) concerning evil. And the God of peace will crush Satan under your feet shortly." Looks like we are protected by the Ultimate Super Hero- our God in Heaven!

Until next time, kiddies, *TJ signing off!*



ARKY's Calendar of Events **(as of 10/3/14)**

See more details and complete list at
<http://www.arky.org/current/index.htm>

Apr 9-11: 2015 Great Midwest Homeschool Convention at Duke Energy Convention Center, Cincinnati, OH. Speakers such as Heidi St. John, Dr. Kathy Koch, Dr. Jay Wile, Cathy Duffy, and dozens of others are included in the fantastic line-up of speakers.

100s of information-packed workshops are included in your Individual or Family Registration. Additional options, such as Friday Night Family Comedy Night with Bob Smiley, REAL FAITH for the REAL WORLD Teen Track, Mom's Night PJ Party with Heidi St. John, are also available for purchase. An optional, high-energy Children's Conference is also offered through The Giant Cow Ministries.

Don't miss the opportunity to hear Dr. Henry Fenichel, a Holocaust survivor or Rebecca Kiessling, an attorney, former homeschooling mom, and pro-life advocate who was conceived out of a brutal rape.

Are you considering a new homeschool curriculum? Do you have questions about a specific book or resource? Speak one-on-one with representatives from these great companies and get all of your questions answered. See the ARKY events page for more information. ARK is exhibiting.

***Apr 13:** 7:00 pm until 8:35 pm. **DVD: Blood Moons: Decoding the Imminent Heavenly Signs** with Mark Biltz at ARKY's House. RE-SCHEDULED from March: From the beginning, in Genesis, God declared He specifically created the sun and the moon to be used for signs. These heavenly bodies would be used as signs of coming dramatic historical events when the Creator of the universe would intersect with human history. But how do we unlock the code to interpret the signals? This DVD will show how through out history God, the Master Timekeeper, has used the heavenly bodies to communicate to us when significant events will happen. What are the feasts days? What is the difference between the biblical calendar and the one we use today? Why should you be concerned about eclipses in the sky? This answers these questions and more. It explains the importance of these biblical celebrations and milestones and shows how you too can be aware of the signs of things to come.

Apr 24-26: 12th **Branson Worldview Weekend Family Reunion** with Dr. John MacArthur at The

Oak Ridge Boys Theatre, 464 State Highway 248, Branson, MO. Ph: (901) 863-8792. \$75 until April 14th.

Apr 25, 10:00 am to 2:00 pm. **Cedar Bog Nature Preserve-FREE Day** with Naturalist led hourly tours 10 am to 2 pm at Cedar Bog Nature Preserve, 980 Woodburn Rd, Urbana, OH 43078. North of Springfield just off US 68. Map, Urbana, OH. Ph: (937) 484-3744. Weekly Hours Wed-Sun, 10 am - 4 pm. Admission \$5.00 normally. The winding wooded trail, approximately one mile long, takes you through a large section of the 427 acres dedicated State of Ohio Nature Preserve. It is also next to a bike trail. Go by yourself or contact us to join a group. 937-256-2759. **ORCHID WALK** Saturday, June 6. They have several types of Ohio grown orchids.

***May 11,** 7:00 pm to 8:35 pm. Election of officers and discussion of topics at the **ARK Annual Meeting** at ARKY's House.

June 7, 8:00 am to 12:00 pm. **The Incredible Account of Genesis OH Tour!** with CMI Speaker Dr. Jonathan Sarfati at Risen Christ Lutheran Church, 41 E Possum Rd, Church Web Page, Springfield, OH. Ph: (937) 323-3688. 8am Traditional Worship, 10:45am Praise Service.

***Jun 8,** 6:00 pm to 8:35 pm. **ARK Annual Banquet - #20** with CMI Speaker Dr. Jonathan Sarfati at MCL Cafeteria Kettering, 4485 Far Hills Ave (just north of David Rd) (299-6605), Dayton, OH. Ph: (937) 256-ARKY. The Incredible Account of Genesis OH Tour!

***Jul 13,** 7:00 pm to 8:35 pm. With Urban Planning DVD describing how we are being out flanked in influencing our world for Christ at ARKY's House.

Note Asterisk (*) Indicates regular ARK meeting at ARKY's House, 2002 S Smithville Rd, Dayton, OH. One mile South of US 35, just past Wayne Ave. Park on side. Ph: (937) 256-ARKY.

The ARK monthly meeting is every 2nd Monday of the month. The ARK bookstore is open 30 minutes before and after the meeting.

Membership NOT required to attend meetings! - Get the latest "CURRENT EVENTS" on the web at <http://www.arky.org>.

Financial Statement 2014
General Fund

Balance 1/1/14	\$10,725.26
Receipts	
Memberships/Newsletters	1,625.00
Donations	0.00
Speaker Gifts	0.00
Projects	0.00
Special Events /Banquet	195.00
Equipment Sold	50.00
Kroger Gift Cards/Promotion	459.59
Reimbursed	214.97
Misc (internet server refund)	496.49
Non-Tax Sales	2,301.48
Taxable Sales	18,487.17
Sales tax collected	1,309.54
Loan Proceeds	0.00
Total	35,864.50

Disbursements	
Newsletter/CC	283.99
Projects	0.00
Office	160.71
Telephone	2,042.19
Children's Ministry	0.00
Exhibiting	3,460.15
Web	729.40
Inventory	16,650.44
Equipment	29.97
Supplies	326.32
Insurance	1,889.00
Professional Fees	777.84
Sales Tax Paid	1,822.73
Speaking/Events	110.33
Misc.	615.99
Tithes&Gifts	300.00
Reimbursed	212.97
Total	29,412.03
Balance 12/31/14	6,542.47

Building Fund

Balance 1/1/14	-8,785.77
Matching Mortgage Fund	5,654.69
Real Estate Taxes Refund	17,232.52
Donations	9,451.18
Total	23,781.85
Expenses	
Mortgage	17,076.56
Building	171.90
Utilities	3,606.28
Real Estate Taxes	1,283.40
Matching Funds	5,654.69
Repairs	165.00
Total Bld. Expenses	27,957.83
Balance 12/31/14	-4175.98

Net Balance, Both Funds 2,276.49

ARK Supporter Benefits

1. **30% discount:** minimum on all purchases;
2. **Quarterly newsletter:** ARK members receive news and expansion plans;
3. **National support:** 10% of supporters' general donations is given to Answers in Genesis, our voluntary support for a national Biblical creation science organization;
4. **Webpage:** www.arky.org provides logical, Biblical information to a world saturated with an unbiblical, ill-suited naturalism for the needs of people;
5. **Monthly ARK meetings:** interesting speakers or DVD program on a variety of subjects, provided FREE to the community;
6. **Major speaker programs:** sponsored into the area or promoted by ARK;
7. **Local ARK speakers:** available for community and church events;
8. **Encouragement and Answers:** for belief in the Biblical Creator;
9. **Leadership training:** periodically opportunity to learn how to serve in your church or school or study group;
10. **Public materials:** make available Creation resources – books, audios, and DVDs to public;
11. **Lending library:** by mail or at ARKY house for supporters;
12. **Bookstore available:** during regular hours and by appointment;
13. **Bookstore honors specials:** when offered by AiG, ICR, and WallBuilder if items are in stock.

Is it time for you to renew?

Please check the date above your name and address. If the date has past or coming up soon, please renew today.

Be an ARK Supporter!

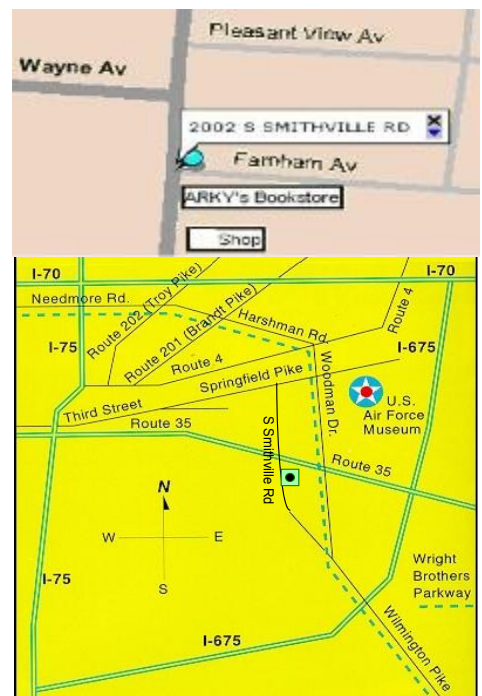
Name: _____
 Addr: _____
 City, ST ZIP: _____
 Ph: () _____ - _____ Work: _____ - _____
 Email: _____
 Church: _____
 City/Zip: _____
 Membership Amount : \$ _____
 Gift Amount : \$ _____
 Total Enclosed: \$ _____
 Building Pledge: \$ _____ per _____
 Membership: One Spousal Family

ARK individual membership is only \$25/year (\$30 couple, \$40 family). To receive this newsletter quarterly for free, please complete the address form and put "Jesus" in amount. (Please include mailing label, if you are renewing.)

ARKY's Bookstore

Bookstore hours manned by volunteers are:

- Tuesday 1:00 pm - 5:00 pm;**
- Thursday 1:00 pm - 5:00 pm;**
- Saturday 1:00 pm - 5:00 pm;**
- OTHER TIMES BY APPOINTMENT**





Lord, You alone are Truth. Help us pass it on.
Your best advertisement is your truth tellers.

PASS ON NEWSLETTER
Email: arkfoundation@arky.org
Web: www.arky.org

PO Box 20069, Dayton, OH 45420-0069 Ph: (937) 256-ARKY

RETURN SERVICE REQUESTED

Please Renew Your Subscription Early and save us added expenses!



ARK Annual Banquet - #20

Please reserve Monday, June 8, from 6:00 pm until 8:35 pm for ARK's 20th annual banquet with Dr. Jonathan Sarfati at MCL Cafeteria Kettering, 4485 Far Hills Ave (just north of David Rd) (299-6605), Dayton, OH. Ph: (937) 256-ARKY. RSVP requested but not required to attend. Cost is limited to the food you order. Eat from 6:00 until 7:20 when program starts. Meet speaker and contacts. **A donation will be requested to benefit ARK or CMI. CMI books will be available.**

Jonathan has written numerous books on creation apologetics including the very popular Refuting Evolution and Refuting Evolution 2. He is the co-founder of the Wellington Christian Apologetics Society, New Zealand.

Dr. Sarfati is currently full-time for **Creation Ministries International** in Atlanta, GA as author, speaker, apologist, and scientist. Jonathan is a co-editor of Creation magazine and

also writes and reviews articles for the in-depth, peer-reviewed Journal of Creation (formerly TJ), as well as being active in speaking ministry.

